

Permanent Exhibitions and Museum Shop

Nakanoshima Gennan Tea House



The Former Murayama residence is a nationally-designated Important Cultural Property. One of the structures on its premises is the Gennan Tea House.

An exact 1:1 reproduction of this tea house is a permanent exhibit at the Nakanoshima Kosetsu Museum of Art. The exhibition reproduces not only the house but also its surroundings, a first for permanent exhibits of tea houses in Japan.

Murayama Ryōhei Memorial Room

A selection of precious exhibit items, including a 1/90 scale model of the former Murayama residence and a reconstruction of its Western-style building's living room, along with a large-format chronology and explanatory panel profile the life of Murayama Ryōhei. The history of *Kokka*, the oldest art journal in the world founded by Okakura Tenshin and financially supported by Murayama, is also on display.



Museum Shop



Along with catalogs of exhibitions, the museum shop offers a variety of our original goods. Souvenirs based on exhibition themes are also on sale.



Visitor Information

Hours 10:00 to 17:00 (last admission at 16:30)

Closed Mondays and during New Year's holiday period.

*The museum opens on Mondays that fall on holidays, and is closed on the following day. The museum also closes during exhibition installations.

Admission Adults ¥900 (¥700*)

High school and university students ¥500 (¥350*)

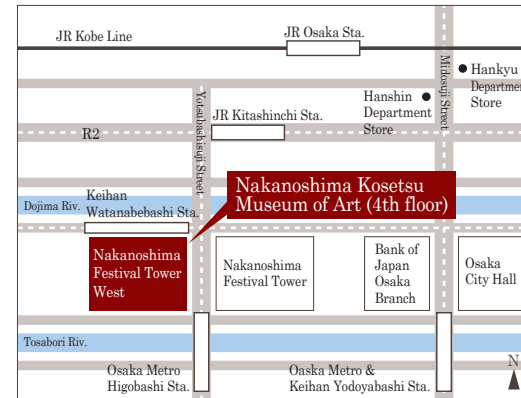
Elementary and junior high school students ¥200 (¥100*)

*For advance ticket purchase (available for adults only) and groups of 20 or more.

-A different admission fee may apply to special exhibitions.

-Half admission for mentally or physically disabled people and one person accompanying them.

Access



< Arriving via rail >

By Osaka Metro (subway) or Keihan Railway

- Osaka Metro Yotsubashi Line: Higobashi Station, direct access from Exit 4
- Keihan Nakanoshima Line: Watanabebashi Station, direct access from Exit 12
- Osaka Metro Midosuji Line/Keihan Main Line: Yodoyabashi Station, approx. 5-minute walk from Exit 7

By JR

- JR Osaka Station: approx. 11-minute walk from Sakurabashi Exit
- JR Tozai Line Kitashinchi Station: approx. 8-minute walk from Exit 11-5

< International arrival >

- From Kansai International Airport: approx. 50 minutes by limousine bus to the Osaka Station area
- From Osaka International Airport: approx. 30 minutes by limousine bus to the Osaka Station area

Nakanoshima Kosetsu Museum of Art

Nakanoshima Festival Tower West, 4F, 3-2-4, Nakanoshima, Kita-ku, Osaka,

535-0005, Japan

Tel: +81-6-6210-3766 Fax: +81-6-6210-4190

<http://www.kosetsu-museum.or.jp/nakanoshima/>

English

2020

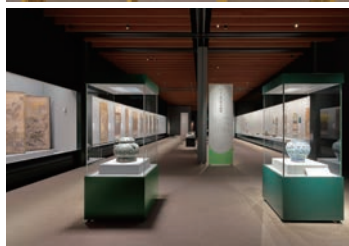
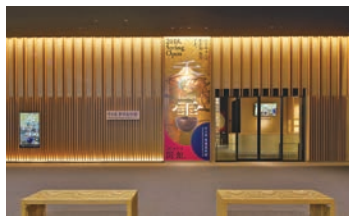
中之島 香雪美術館
Nakanoshima Kosetsu Museum of Art

The Kosetsu Museum of Art opened in Mikage, Higashi Nada ward, Kobe, in 1973, based on a collection of artworks personally built by Murayama Ryōhei (1830-1933), the founder of the Asahi Shimbun newspaper company. At the quiet foot of Mount Rokko, the museum is situated on the grounds of the former Murayama residence, consisting of time-honored buildings (designated by the Japanese government as an Important Cultural Property).

To celebrate the Museum's 45th anniversary in March 2018, we opened our second exhibition venue, the Nakanoshima Kosetsu Museum of Art in Osaka. Amid skyscrapers in the heart of the business district, this space is like a mountain retreat within the city.

Our collection showcases early works of art from Japan and other parts of East Asia. Consisting of objects ranging from swords and armor, Buddhist art, calligraphy, and medieval and early modern paintings to tea utensils, the collection includes nineteen Important Cultural Properties and twenty-three Important Art Objects.

We hope you will look forward to our exhibitions in coming years including museum collection shows and special shows with specific focuses that present the splendor of Japanese and East Asian arts.



Kosetsu Museum of Art
2-12-1, Mikagegunge, Higashi Nada ward,
Kobe, Hyogo
Tel: +81-78-841-0652
<http://www.kosetsu-museum.or.jp/mikage/>

Exhibitions 2019—2021

*Some exhibits may be changed during the respective exhibition periods for conservation reasons.



Exhibition

The Multitude of Painters in the Kansai Region I

Tuesday, December 17, 2019 –
Sunday, March 15, 2020

Small Birds and Peonies
Kakutei
Japan, Edo period, 18th century
Private Collection



Exhibition

The Multitude of Painters in the Kansai Region II

Saturday, September 5 –
Sunday, October 18, 2020

Landscape
Ueda Kōfu
Japan, Edo period, 18th century
Murayama Collection

Special Exhibition

The ABC's of Fragrance: Exploring the Culture of Incense through Its Utensils

Saturday, April 4 – Sunday, May 31, 2020



Incense Cabinet with Design of Young Pines,
Cherry blossoms and Plums (Pieces of the set)
Japan, Edo to Meiji period, 19th century
Murayama Collection



A set of Utensils Box for Cutting Incense wood
with Design of Pine and Landscape
Japan, Edo period, 18th century
Murayama Collection

Collection Exhibition

Tea Utensils and Inscribed Paintings from the Kosetsu Museum Collection

Saturday, June 13 –
Monday, August 10, 2020



Tea Bowl with Here's-foot-fern Motif,
Overglaze Polychrome Enamels
Nonomura Ninsai
Japan, Edo period, 17th century
Kosetsu Museum of Art



Water Jar, Shino Type,
with Design of Pine and Woven Fence
Mino ware
Japan, Momoyama period, 17th century
Important Cultural Property
Kosetsu Museum of Art

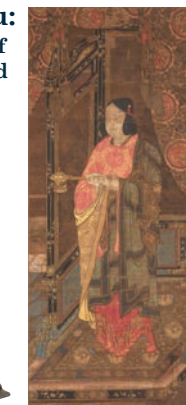
Special Exhibition

Weaving Tales of Prince Shōtoku: Commemorating the Restoration of Portrait of Prince Shōtoku as a Paragon of Filial Piety and Illustrated Life of Prince Shōtoku

Saturday, October 31 –
Sunday, December 13, 2020

Prince Shōtoku as a Paragon of Filial Piety
Japan, Kamakura period, 14th century
Important Cultural Property
Kosetsu Museum of Art

Prince Shōtoku Worshipping Buddha
Japan, Kamakura period, 13-14th century
Kosetsu Museum of Art

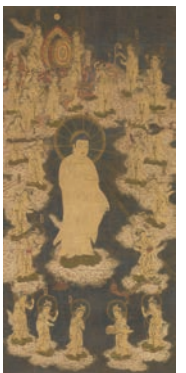


Special Exhibition

Paintings of the Tale of Genji through Works Attributed to Tosa Mitsunobu

Saturday, January 30 –
Sunday, March 14, 2021

Genealogy of Characters
from Tale of Genji
Japan, Muromachi period,
16th century
Murayama Collection



Amitabha Triad and Twenty-five
Bodhisattvas in Welcoming Descent
Japan, Muromachi period, 15th century
Kosetsu Museum of Art