

The Multitude of Painters in the Kansai Region II

This exhibition is the second of our museum's series on painters of the Kamigata (Kansai) region, which features the explosion of talent in this area during the Edo period (1615-1868). Here, we focus on three Osaka painters –Ueda Kōfu (1760-1832), Nagayama Kōin (1765-1849), and Ueda Kōchō (1788-1850), who studied the styles of the Maruyama and Shijo schools in Kyoto in the latter half of the eighteenth century, while forging their own artistic modes. Inspired by the painter-poet Yosa Buson (1716-1783) and studying with the founder of Shijō school Go Shun (1752-1811), the Osaka artists admired these two masters and incorporated the painting trends of Kyoto, while expressing their friendly and easygoing personalities in their works. This exhibition showcases the works of Kōfu, Kōin, and Kōchō and the masters Buson and Go Shun, who influenced the three. Also explored are developments made in the Osaka painting scene.

In closing, we extend our heartfelt appreciation to the owners, who loaned us their invaluable artworks. We also express our gratitude to all those who made this exhibition possible.

Admission

Adults

¥ 900 (¥ 700*)

High school and university students

¥ 500 (¥ 350*)

Elementary and junior high school students

¥ 200 (¥ 100*)

*For groups of 20 or more

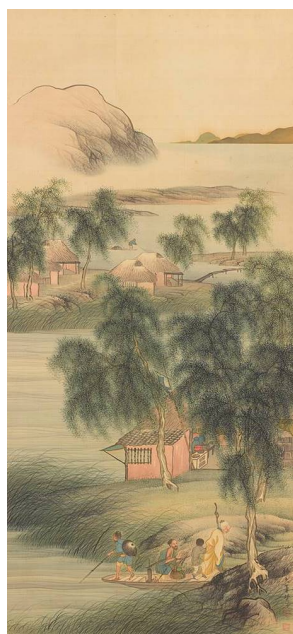


By Yosa Buson (1716-1783)
Horse Rider in Peach Grove

Edo period, 18th century

Hankyu Culture Foundation Itsuo Art Museum

【7/3~7/25】



By Ueda Kōfu (1760-1832)
Green Willows in Landscape

Edo period, 19th century

Private Collection



By Nagayama Kōin (1765-1849)
Peacock and Magnolias

Edo period, 19th century

The Former Nakanishi Residence